

AIR FORCE T.O. 35C2-3-442-14
 ARMY TMS-6115-600-24P
 NAVY NAVFAC P-8-628-24P
 MARINE CORPS SL-4-07464B

SECTION II. REPAIR PARTS FOR ORGANIZATIONAL, INTERMEDIATE (FIELD),
 (DIRECT AND GENERAL SUPPORT) AND DEPOT MAINTENANCE

(1) ILLUS- TRATION		(2) SMR CODE				(3) USMC		(4)	(5) DESCRIPTION	(6)	(7)	(8)	
a	b	a	b	c	d	a	b	NATIONAL STOCK NUMBER	REF NUMBER & MFR CODE	USABLE ON CODE	U/M	QTY INC IN UNIT	USMC QTY PER EQUIP
FIG NO.	ITEM NO.	ARMY	AIR FORCE	NAVY	USMC	SSI	REPL FACTOR						
									GROUP 09 - POWER GENERATION SYSTEM				
									GENERATOR ASSEMBLY AND RELATED PARTS				
51	1	PAFZZ	PAFZZ	PAFZZ	PAFZZ	D	.008	5305-00-926-5517	SCREW, HEX HEAD MS90725-219	96906	EA	8	9
51	2	PAFZZ	PAFZZ	PAFZZ	PAFZZ	D	.010	5310-00-912-7322	WASHER, FLAT MS9320-18	96906	EA	16	16
51	3	PAFZZ	PAFZZ	PAFZZ	PAFZZ	D	.008	5310-00-497-3895	NUT, SELF-LOCKING MS21044N14	96906	EA	8	8
51	4	PAFZZ	PAFZZ	PAFZZ	PAFZZ	D	.008	5305-00-042-6417	SCREW, HEX HEAD MS90725-113	96906	EA	12	16
51	5	PAFZZ	PAFZZ	PAFZZ	PAFZZ	D	.010	5310-00-584-5272	WASHER, LOCK MS35338-48	96906	EA	12	26
51	6	PAFZZ	PAFZZ	PAFZZ	PAFZZ	D	.008	5305-00-724-5911	SCREW, HEX HEAD MS90725-163	96906	EA	8	14
51	7	PAFZZ	PAFZZ	PAFZZ	PAFZZ			5340-00-230-7278	PLATE, LOCKING 71-4470	30554	EA	4	4
51	8	XB	XB	XB	XB				SPACER STEPPED 70-4532	30554	EA	1	1
51	9	XB	XB	XB	XB				WASHER, SPRING TENSION AMB031-40 70-4534-1	02368 30554	EA	1	1
51	10	XB	XB	XB	XB				SPACER 70-4533	30554	EA	1	1
51	11	PAFZZ	PAFZZ	PAFZZ	PAFZZ	D	.008	5305-00-115-9526	SCREW, HEX HEAD MS90725-58	96906	EA	6	9
51	12	PAFZZ	PAFZZ	PAFZZ	PAFZZ	D	.010	5310-00-010-3319	WASHER LOCK MS39338-6	96906	EA	16	32
51	13	XB	XB	XB	XB				CHASSIS, ELECTRICAL EQUIPMENT 71-4382	30554	EA	1	1
51	14	PAFZZ	PAFZZ	PAFZZ	PAFZZ	D	.008	5305-00-269-3208	SCREW, HEX HEAD MS90725-57	96906	EA	10	11
51	15	XB	XB	XB	XB				PANEL 70-4361	30554	EA	1	1
51	16	XB	XB	XB	XB				BRACKET 76-4169	30554	EA	1	1
51	17	PBPHD	PBPHD	PBPHD	PBPHD			6115-00-182-7153	GENERATOR, 100 KW 70-4001	30554	EA	1	1

AIR FORCE T.O. 35C2-3-442-14
ARMY TM5-6115-600-24P
NAVY NAVFAC P-8-628-24P
MARINE CORPS SL-4-07464B

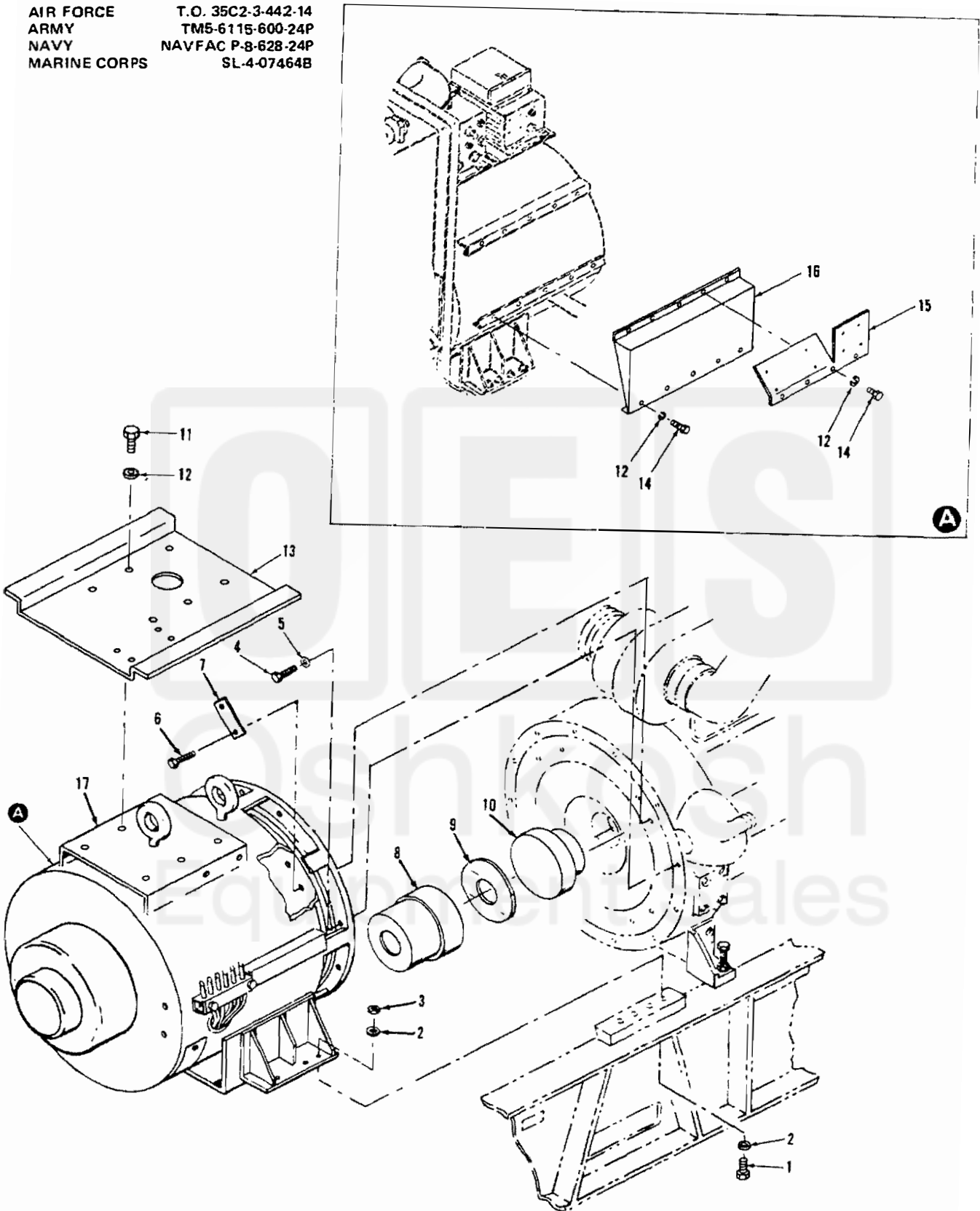


Figure 51. Generator Assembly and Related Parts